

研究用試薬

Avidity determination of antibodies against measles viruses (IgG) Test instruction

ORDER NO.	ANTIBODIES AGAINST	IG CLASS	SUBSTRATE	FORMAT
EI 2610-9601-1 G	Measles virus	IgG	Ag-coated microplate wells	96 x 01 (96)

Indication: The enzyme immunoassay (ELISA) provides avidity in vitro determination of human antibodies of the immunoglobulin class IgG against measles virus in serum or plasma to support the diagnosis of infections with measles virus. The product is designed for use as **IVD**.



Principle of the test: The test kit contains microplate strips each with 8 break-off reagent wells coated with purified measles virus antigens. In the first reaction step, diluted patient samples are incubated in the wells. In the case of positive samples, specific IgG antibodies (also IgA and IgM) will bind to the antigens. In the second incubation step, low-avidity antibodies are dissolved from the antigen by means of urea treatment, high-avidity antibodies remain bound. To detect the bound antibodies, a third incubation is carried out using an enzyme-labelled anti-human IgG (enzyme conjugate) catalysing a colour reaction.

Contents of the test system: EI 2610-9601-1 G:

Component	Colour	Format	Symbol
1. Test kit Anti-Measles Virus ELISA (IgG, order number EI 2610-9601 G)	---	---	---
2. Positive control HA High-avidity anti-measles (IgG, human), ready for use	red	1 x 1.3 ml	POS CONTROL HA
3. Positive control LA Low-avidity anti-measles (IgG, human), ready for use	blue	1 x 1.3 ml	POS CONTROL LA
4. Urea solution for Anti-Measles Virus ELISA, ready for use	yellow	1 x 12 ml	UREA
5. Phosphate buffer ready for use	light blue	1 x 12 ml	PBS BUFFER
6. Test instruction	---	1 booklet	---

LOT Lot description
IVD In vitro diagnostic medical device

CE

 Storage temperature
 Unopened usable until

Storage and stability: The test kit has to be stored at a temperature between 2°C and +8°C. Do not freeze. Unopened, all test kit components are stable until the indicated expiry date.

Waste disposal: Patient samples, controls and incubated microplate strips should be handled as infectious waste. All reagents must be disposed of in accordance with local disposal regulations.

Updates with respect to the previous version are marked in grey.



Preparation and stability of the reagents

Note: All reagents must be brought to room temperature (+18°C to +25°C) approx. 30 minutes before use. After first use, the reagents are stable until the indicated expiry date if stored at +2°C to +8°C and protected from contamination, unless stated otherwise below.

- **Controls:** Ready for use. The reagents must be mixed thoroughly before use.
- **Urea solution:** Ready for use. The urea solution included in this test system may only be used for the avidity determination of antibodies against measles.
- **Phosphate buffer:** Ready for use.

Warning: The controls of human origin have tested negative for HBsAg, anti-HCV, anti-HIV-1 and anti-HIV-2. Nonetheless, all materials should be treated as being a potential infection hazard and should be handled with care. Some of the reagents contain sodium azide in a non-declarable concentration. Avoid skin contact.

Background

Avidity is a measure for the aggregate strength with which a mixture of polyclonal IgG antibodies binds to antigenic epitopes present in a protein or protein mixture. Avidity of measles virus specific IgG matures gradually during the first months following primary infection. Consequently, in acute primary measles virus infections of short duration avidity of anti-measles virus IgG is low, whereas the presence of high-avidity IgG antibodies indicates past or recurrent infections.

Preparation and stability of the patient samples

Sample material: Human serum or EDTA, heparin or citrate plasma.

Stability: Patient samples to be investigated can generally be stored at +2°C to +8°C for up to 14 days. Diluted samples must be incubated within one working day.

Sample dilution: Patient samples to be investigated are diluted **1:101** with sample buffer.

Example: Add 10 µl of sample to 1.0 ml sample buffer and mix well by vortexing (sample pipettes are not suitable for mixing).

NOTE: The controls are prediluted and ready for use, do not dilute them.



Incubation

- Sample incubation:**
(1st step) Transfer 100 µl of the controls or diluted patient samples into the individual microplate wells according to the pipetting protocol.
Incubate for **30 minutes** at room temperature (+18°C to +25°C).
- Washing:** Manual: Empty the wells and subsequently wash **1 time** using 300 µl of working-strength wash buffer.
Automatic: Wash reagent wells **1 time** with 450 µl of working-strength wash buffer (program setting: e.g. TECAN Columbus Washer "Overflow Mode").
- Leave the wash buffer in each well for 30 to 60 seconds per washing cycle, then empty the wells. After washing (manual and automated tests), thoroughly dispose of all liquid from the microplate by tapping it on absorbent paper with the openings facing downwards to remove all residual wash buffer. Free positions on the microplate strip should be filled with blank wells of the same plate format as that of the parameter to be investigated.
- Urea incubation:**
(2nd step) Pipette 200 µl of urea solution into each of the microplate wells of the first microtiter strip and 200 µl of phosphate buffer into each of the microplate wells of the second microtiter strip.
Incubate for **10 minutes** at room temperature (+18°C to +25°C).
- Washing:** Empty the wells. Wash as described above, but wash **3 times** using working-strength wash buffer for each wash.
- Note: Residual liquid (> 10 µl) in the reagent wells after washing can interfere with the substrate and lead to false low extinction readings.
Insufficient washing (e.g., less than 3 wash cycles, too small wash buffer volumes, or too short residence times) can lead to false high extinction readings.
- Conjugate incubation:**
(3rd step) Pipette 100 µl of enzyme conjugate (peroxidase-labelled anti-human IgG) into each of the microplate wells.
Incubate for **30 minutes** at room temperature (+18°C to +25°C).
- Washing:** Empty the wells. Wash as described above, but wash **3 times** using working-strength wash buffer for each wash.
- Substrate incubation:**
(4th step) Pipette 100 µl of chromogen/substrate solution into each of the microplate wells.
Incubate for **15 minutes** at room temperature (+18°C to +25°C) protect from direct sunlight.
- Stopping:** Pipette 100 µl of stop solution into each of the microplate wells in the same order and at the same speed as the chromogen/substrate solution was introduced.
- Measurement:** **Photometric measurement** of the colour intensity should be made at a **wavelength of 450 nm** and a reference wavelength between 620 nm and 650 nm **within 30 minutes of adding the stop solution**. Prior to measuring, carefully shake the microplate to ensure a homogeneous distribution of the solution.



Pipetting protocol

	1	2	3	4	5	6	7	8	9	10	11	12
A	pos HA	pos HA	P 7	P 7	P 15	P 15						
B	pos LA	pos LA	P 8	P 8	P 16	P 16						
C	P 1	P 1	P 9	P 9	P 17	P 17						
D	P 2	P 2	P 10	P 10	P 18	P 18						
E	P 3	P 3	P 11	P 11								
F	P 4	P 4	P 12	P 12								
G	P 5	P 5	P 13	P 13								
H	P 6	P 6	P 14	P 14								

The pipetting protocol is an example of the avidity determination of IgG antibodies in 18 patient samples (P 1 to P 18).

Controls (pos HA and pos LA) as well as the patient samples have been incubated in duplicate in one well each of two different microtiter strips. The reagent wells of the microtiter strips 1, 3, 5 etc. are treated with urea solution after the incubation with patients samples, the reagent wells of the microtiter strips 2, 4, 6 etc. are treated with phosphate buffer.

The wells can be broken off individually from the strips. This makes it possible to adjust the number of test substrates used to the number of samples to be examined and minimises reagent wastage.

Both positive controls with high-avidity and low-avidity antibodies serve as internal controls for the reliability of the test procedure. They should be assayed with each test run.

Calculation of results

Attention:

Reliable results in the the measurement of IgG antibody avidity can only be yielded if the patient sample contains a diagnostically significant concentration of specific antibodies.

Generally, the determination of the relative avidity index is not helpful in samples which have an O.D. of <0.140 after incubation without urea treatment.

In some patients with an acute infection, very high titers of IgG antibodies can be found. Even though the specific IgG antibody populations may be of both high and low avidity due to different maturation stages, the vacant antigen epitopes are predominantly occupied by high-avidity antibodies in high titer samples. The determination of the avidity of the whole specific IgG antibody population can lead to false high RAI values in results.

False high RAI values were found in some cases of acute infections when the extinction value of the IgG measurement without urea treatment was >1.200.

It is recommended for samples with extinction values of >1.200 to repeat the avidity determination with a higher sample dilution (e. g. 1:401). If low avidity of IgG antibodies is already found at extinction values of >1.200, no further testing is necessary.



Instruction for the calculation of the relative avidity index (RAI):

The presence of low-avidity antibodies in a patient's serum has been proved if the ELISA extinction is considerably reduced by urea treatment. For an objective interpretation the relative avidity index (RAI) is calculated and expressed in percent using the extinction with and without urea treatment.

$$\frac{\text{Extinction of the sample with urea treatment} \times 100}{\text{Extinction of the sample without urea treatment}} = \text{relative avidity index (RAI) in \%}$$

The upper limit of the range of low-avidity antibodies (**cut-off value**) recommended by EUROIMMUN is 40% RAI. Values below the indicated cut-off are to be considered as an indication of low-avidity antibodies, values between 40% and 60% RAI as equivocal, values above 60% RAI as an indication of high-avidity antibodies. If a result is classified as equivocal, it is recommended to collect a second sample not less than 7 days later and to test it together with the first sample.

RAI < 40%:	indication of low-avidity antibodies
RAI 40% - 60%:	equivocal
RAI > 60%:	indication of high-avidity antibodies

For diagnosis, the clinical symptoms of the patient should always be taken into account along with the serological results.

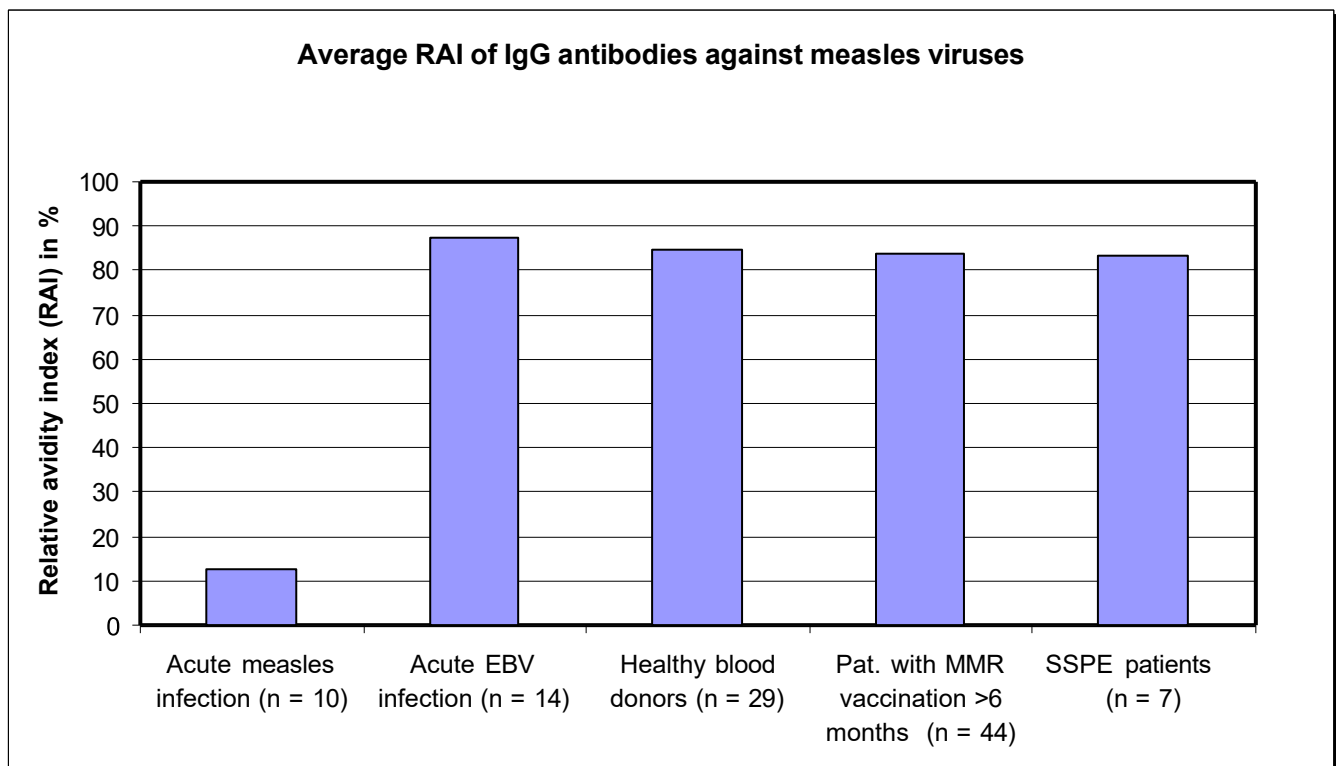
Test characteristics

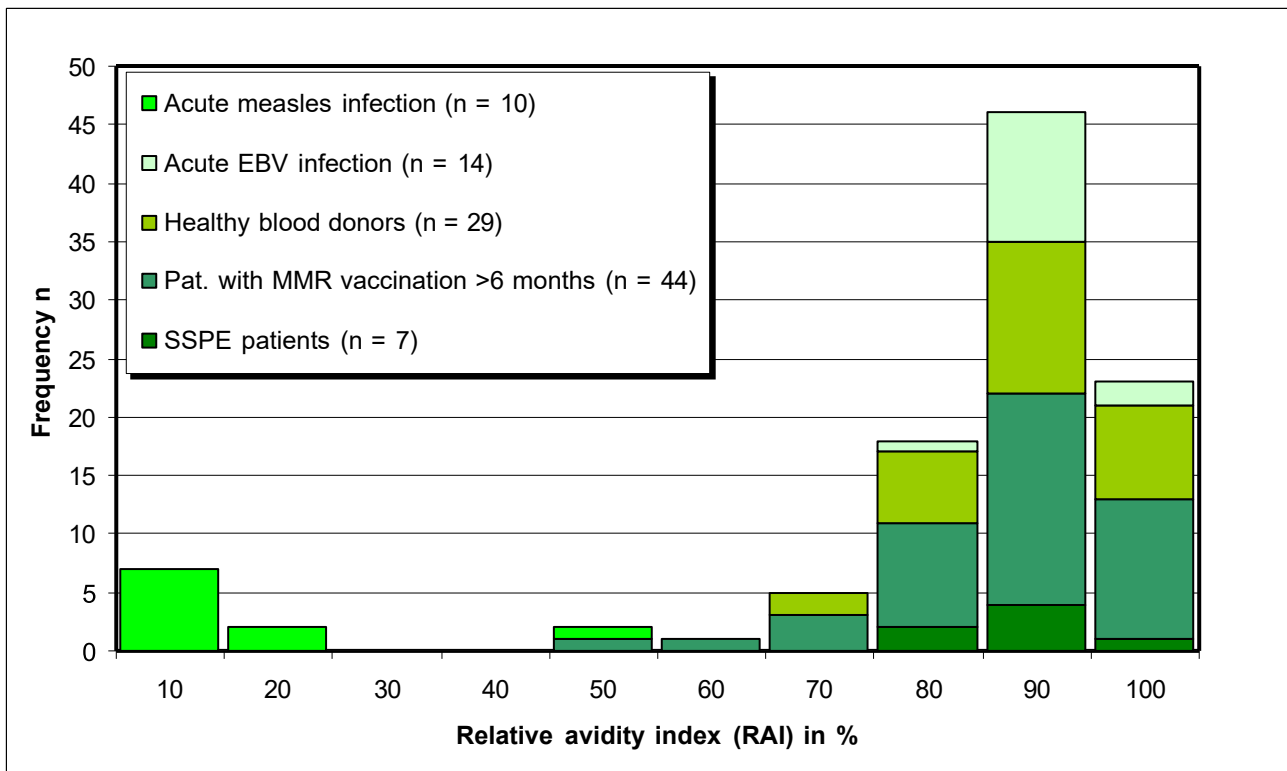
Interference: Haemolytic, lipaemic and icteric samples showed no influence on the result up to a concentration of 10 mg/ml hemoglobin, 20 mg/ml triglycerides and 0.4 mg/ml bilirubin in this ELISA.

A panel of 104 sera from patients with the following diseases was investigated:

- 10 patients with clinically and serologically diagnosed acute measles infection
- 14 patients with acute EBV infection and resulting polyclonal stimulation
- 29 healthy blood donors
- 44 patients with MMR vaccination more than 6 months ago
- 7 patients with SSPE after measles infection

In these panels patients with acute infection showed an average RAI of 13%, whereas the RAI determined for the remaining patients without acute measles infection was > 80%.





Clinical significance

The **measles virus (MV)** is the most instantly recognisable member of Morbilliviruses, a group of viruses belonging to the Paramyxoviridae family [1]. No animal reservoir is known. The measles virus causes an acute feverish illness which occurs mainly in childhood and is very infectious [2, 3]. In 1999, measles still caused worldwide 873,000 deaths per year [1, 4, 5]. Today they are less frequent because of vaccination, especially in the western hemisphere [6, 7]. However, measles epidemics are still observed in some countries [2, 3, 4, 5, 6, 8, 9]. Individuals acutely infected with the virus exhibit a wide range of clinical symptoms ranging from a characteristic mild self-limiting infection to death [1, 2, 8, 10].

MV infections are characterised by an incubation period of about 10 days, flue-like symptoms with fever, malaise, catarrh of the upper respiratory tract, cough, congestion and conjunctivitis. Soon afterwards the measles rash, a typical exanthema, appears first near the ears, then on the forehead, in the face and over the rest of the body [1, 5, 8, 11].

Complications arising from MV infections include secondary bacterial pneumonia, otitis media (approx. 1%), encephalitis (approx. 1%), myocarditis, miscarriage and a condition called subacute sclerosing panencephalitis (SSPE) [5, 12, 13]. Persistent MV infection of the otic capsule is an aetiologic factor in otosclerosis [9, 14]. Anti-measles IgG for the serological diagnosis of otosclerotic hearing loss has a high specificity and sensitivity [15]. SSPE is a progressive, generally fatal brain disorder caused by chronic measles virus infection. It occurs about 7 to 10 years after the infection and generally kills within 3 years from the onset of the symptoms. The patients suffer from behavioural changes, cognitive deterioration, vision problems and eventually advanced neurological symptoms, such as severe spasms, and finally severe physical and mental impairment that leads to death [13]. Males are more commonly affected than females.

The risk of SSPE from measles was underestimated according to older data [12]. Actual papers put it at closer to 6.5 to 11 cases of SSPE per 100,000 measles infections; that means 7 to 13 times higher than the earlier estimates [1, 9, 12].



Women with acute measles infection during pregnancy and a negative result for measles-specific antibodies were observed e.g. in Japan, India, Thailand, Kenya and Brazil: 3 of 4 pregnancies ended in preterm delivery, spontaneous abortion or stillbirth; 2 of 4 neonates were found to have congenital measles with a positive result for IgM antibodies [5].

Antibodies against MV can be found in the serum of almost all patients during and after a measles infection. IgM antibodies develop soon after the onset of symptoms and can be measured using ELISA or indirect immunofluorescence tests (IIFT) [16, 20, 21, 22]. 50% of patients have IgM antibodies within three days, more than 90% within 10 days after occurrence of the rash [15, 17]. The Anti-Measles Virus IgM ELISA is more rapid and sensitive for the serological diagnosis of measles infections than other tests [15, 18, 19]. MV infections often cause an increase in heterologic antibodies. The statistically evaluated detection rate for antibodies is significantly higher for ELISA and IIFT in comparison with e.g. neutralisation tests [16, 20]. IgG and IgM antibodies against MV are reliable markers to confirm suspected measles infections.

Measles myelitis or encephalitis can be verified by detecting antibodies against measles in the cerebrospinal fluid (CSF) [23, 24, 25, 26]. These specific antibodies are synthesised in the brain [24]. The CSF-serum quotient (LSQ) allows to differentiate between a blood-derived and a pathological, brain-derived specific antibody fraction in CSF, taking into account individual changes in the blood/CSF barrier function [24, 25, 26, 27]. Therefore it is necessary to confirm the presence of antibodies against MV using ELISA both in CSF and in the serum. During measles myelitis or encephalitis an intrathecal synthesis of antibodies against MV in CSF takes place. Due to the fact that specific antibodies can pass the blood-cerebrospinal fluid barrier by diffusion from serum to CSF it is necessary to determine the relative CSF/serum quotient (CSQ_{rel.}, synonym: antibody specificity index) [24, 25, 26]. The quotient is calculated from the amount of specific anti-measles virus IgG antibodies in total CSF IgG in proportion to the amount of specific IgG antibodies in total serum IgG. During conversion the CSF/serum quotient of the pathogen-specific IgG-antibody concentrations CSQ_{path.-spec.} (IgG) is put into relation to the CSF/serum quotient of the total IgG concentrations CSQ_{total} (IgG) [27]. A relative CSQ result above 1.5 indicates the production of specific antibodies in the central nervous system (CNS) and the involvement of the CNS in the disease [25, 26].

With respect to the severe complications known from measles infections, the Robert Koch Institute in Germany recommends vaccinating small children, with a first shot between the age of 11 to 14 months and a second between 15 and 23 months [2, 4, 10, 11]. Neutralisation activity and persistence of antibodies are induced in response to the immunisation [6, 15].

Life-long immunity is generally developed. However, antibody levels are 8 to 10 times lower in post-vaccination sera than in convalescent sera [6, 19, 28]. A passive immunisation with specific immunoglobulin concentrates is usually given to immunosuppressed seronegative individuals, such as tumour patients and recipients of transplants, as well as to seronegative pregnant women after exposure to the virus.

The European Regional Office of the WHO aims at eliminating measles from the region in the following years by area-wide vaccination campaigns [4, 9, 10]. This is expected to limit the number of apparent infections and especially of severe courses of the disease. For the diagnosis of the remaining cases of measles infection and of infections acquired outside Europe as well as for the clarification of atypical courses of the disease in partly immunised patients the antibody determination in serum and CSF will be of growing importance [3, 5, 8, 9].



Literature references

1. Rima BK, Duprex WP. **Morbilliviruses and human disease.** J Pathol 208 (2006) 199-214.
2. Hogg GG, Darlington RJ, Hogg KG, Lester R. **Measles immunity and immunisation status in Australian children 1 to 4 years of age.** J Paediatr Child Health 42 (2006) 165-169.
3. Karimi A, Arjomandi A, Alborzi A, Rasouli M, Kadivar MR, Obood B, Pourabbas B. **Prevalence of measles antibody in children of different ages in Shiraz, Islamic Republic of Iran.** East Mediterr Health J 10 (2004) 468-473.
4. Cutts FT, Steinglass R. **Should measles be eradicated.** Br Med J 316 (1998) 765-767.
5. de Barros EN, Silva EM. **Epidemiologic surveillance of measles and rubella in Campinas (SP), Brazil: the reliability of the data.** [Article in Portuguese] Rev Panam Salud Publica 19 (2006) 172-178.
6. Gay N, Ramsay M, Cohen B, Hesketh L, Morgan-Capner P, Brown D, Miller E. **The epidemiology of measles in England and Wales since the 1994 vaccination campaign.** Commun Dis Rep CDR Rev 7 (1997) 17-21.
7. de Melker H, Pebody RG, Edmunds WJ, Levy-Bruhl D, Valle M, Rota MC, Salmaso S, van den Hof S, Berbers G, Saliou P, Spaendonck MCV, Crovari P, Davidkin I, Gabutti G, Hesketh L, Morgan-Capner P, Plesner AM, Raux M, Tische A, Miller E. **The seroepidemiology of measles in Western Europe.** Epidemiol Infect 126 (2001) 249-259.
8. Ceylan A, Ertem M, Korukluoglu G, Acemoglu H, Kara IH, Erten PG, Arslan C, Ay ME. **An epidemic caused by measles virus type D6 in Turkey.** Turk J Pediatr 47(2005) 309-315.
9. Ota MO, Moss WJ, Griffin DE. **Emerging diseases: measles.** J Neurovirol 11 (2005) 447-454.
10. Shann F. **A little bit of measles does you good.** Br Med J 219 (1999) 4-5.
11. CDC **Measles outbreaks still occur among school-age children and travelers.** MMWR 46 (1997) 242-245.
12. Smith TC. **Measles vaccine doesn't cause SSPE.** Aetiology (2006).
13. Yokoyama T, Sakurai M, Aota Y, Wakabayashi Y, Ohyashiki K. **An adult case of acute disseminated encephalomyelitis accompanied with measles infection.** Intern Med 44 (2005) 1204-1205.
14. Singh MP, Ratho RK, Panda N, Mishra B. **Otosclerosis – do we have a viral aetiology?** Nepal Med Coll J 7 (2005) 129-130.
15. Tische A, Gerike E, Strauss J, Smelhausova M, Mrazova M. **Immunoglobulin specific and conventional methods in the serodiagnosis of measles.** [Article in German] Z Gesamte Hyg 35 (1989) 367-369.
16. Roodbari F, Roustai MH, Mostafaie A, Soleimanjdahi H, Foroshani RS, Sabahi F. **Development of an enzyme-linked immunosorbent assay for immunoglobulin M antibodies against measles virus.** Clin Diagn Lab Immunol 10 (2003) 439-442.
17. Rossier E, Miller H, McCulloch B, Sullivan L, Ward K. **Comparison of immunofluorescence and enzyme immunoassay for detection of measles-specific immunoglobulin M antibody.** J Clin Microbiol 29 (1991) 1069-1071.
18. Pedersen IR, Antonsdottir A, Evald T, Mordhorst CH. **Detection of measles IgM antibodies by enzyme-linked immunosorbent assay (ELISA).** Acta Pathol Microbiol Immunol Scand [B] 90 (1982) 153-160.
19. Glikmann G, Petersen I, Mordhorst CH. **Prevalence of IgG-antibodies to mumps and measles virus in non-vaccinated children.** Dan Med Bull 35 (1988) 185-187.

20. Bouche FB, Brons NH, Houard S, Schneider F, Muller CP. **Evaluation of hemagglutinin protein-specific immunoglobulin M for diagnosis of measles by an enzyme-linked immunosorbent assay based on recombinant protein produced in a high-efficiency mammalian expression system.** J Clin Microbiol 36 (1998) 3509-3513.
21. EUROIMMUN AG. Stöcker W, Fauer H, Krause C, Barth E, Martinez A. **Verfahren zur Optimierung der automatischen Fluoreszenzerkennung in der Immundiagnostik.** Deutsche Patentanmeldung (Offenlegungsschrift) DE 10 2006 027 516.0 und WO2007140952 (2006).
22. EUROIMMUN AG. **Aktuelle Themen der Autoimmundiagnostik und der Infektions-Serologie.** Wissenschaftliches Fortbildungsseminar mit Vorträgen von Prof. Dr. G. Wick, Prof. Dr. N. Sepp, Prof. Dr. F. Deisenhammer, Dr. med. W. Stöcker, Prof. Dr. Gerold Stanek, Prof. DDr. R. Würzner, A. Krapf, Dr. med. Dipl. oec. med. J. Brunner, Innsbruck (2007).
23. Dennin RH, Herb E. **Immunological diagnosis in viral infections of the central nervous system: course of antibody titres against homo- and heterologous viruses.** Med Microbiol Immunol 178 (1989) 255-268.
24. Reiber HO, Lange P. **Quantification of Virus-Specific Antibodies in Cerebrospinal Fluid and Serum: Sensitive and Specific Detection of Antibody Synthesis in Brain.** Clin Chem 37 (1991) 1153-1160.
25. Reiber H, Peter JB. **Cerebrospinal fluid analysis: disease-related data patterns and evaluation programs.** J Neurol Sci 184 (2001) 101-122.
26. Reiber H, Lange P. **Virus-spezifische Antikörper in Liquor und Serum. ELISA-Analytik und Auswertung mittels Antikörper-Index und Quotientendiagramm.** Lab Med 15 (1991) 204-207.
27. Reiber H, Ungefehr S, Jacobi C. **The intrathecal, polyspecific and oligoclonal immune response in multiple sclerosis.** Multiple Sclerosis 4 (1998) 111-117.
28. Dine MS, Hutchins SS, Thomas A, Williams I, Bellini WJ, Redd SC. **Persistence of vaccine-induced antibody to measles 26-33 years after vaccination.** J Infect Dis 189 (2004) 123-130.